

A scenic view of a city skyline at sunset, featuring a large suspension bridge and hills in the background. The sky is a warm orange and yellow, and the city buildings are silhouetted against the light. The bridge has three prominent towers.

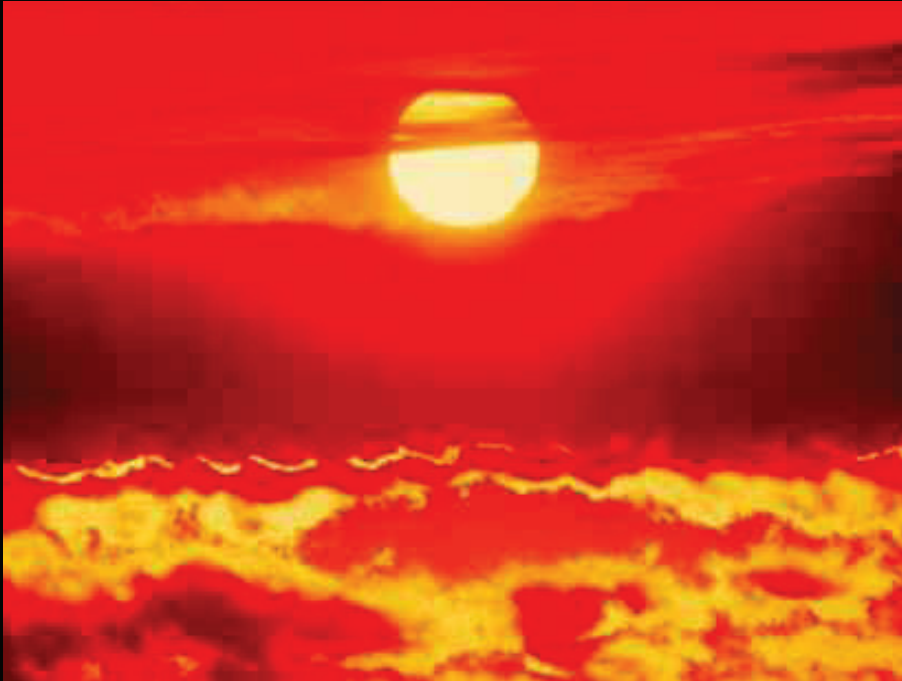
Climate Change and Public Health

Kendall Webster
kw@kendallwebster.com

Climate change hits home



Public health and safety will be impacted by increases in:

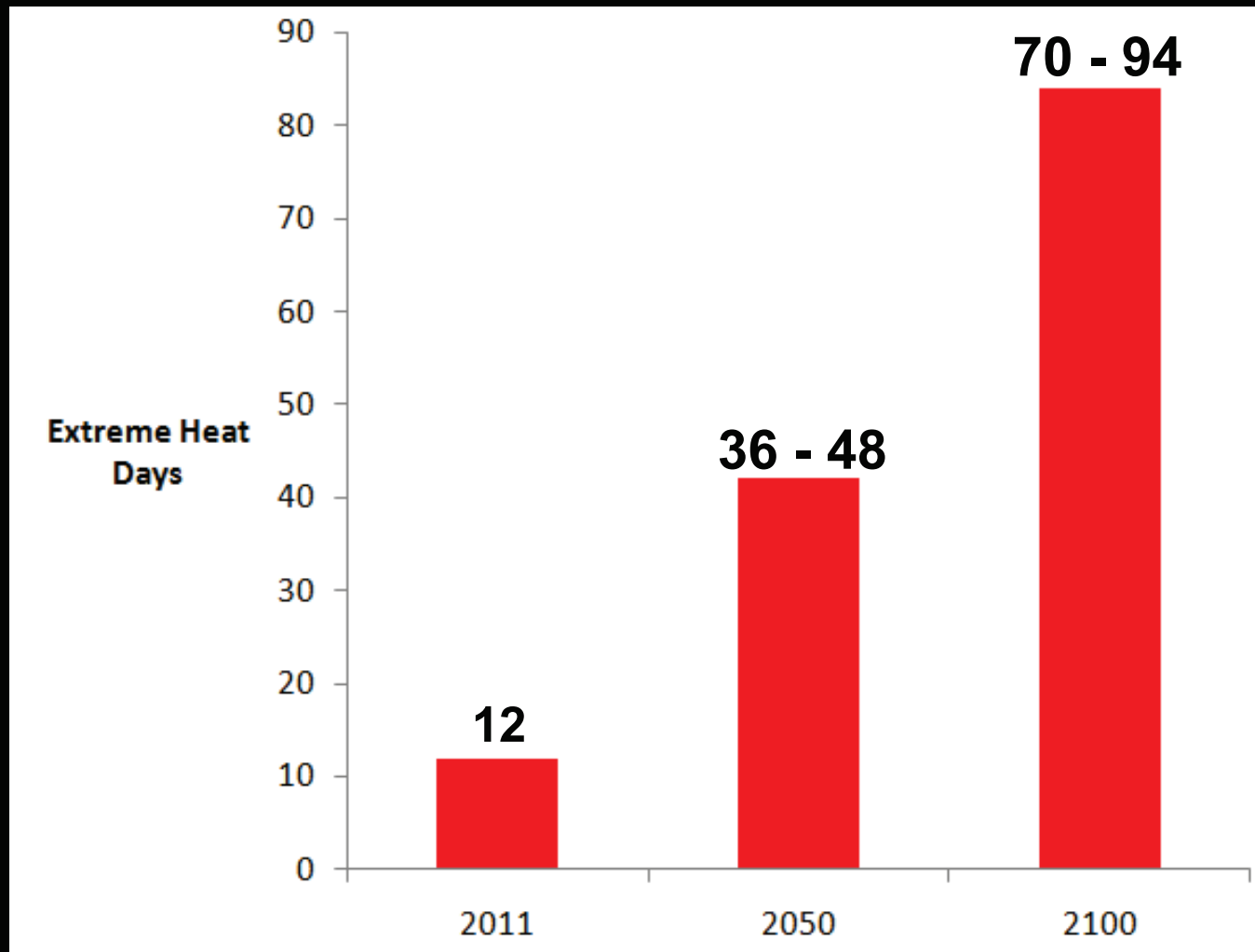


- Extreme heat
- Poor air quality
- Vector-borne diseases
- Storm-related flooding
- Wildfire

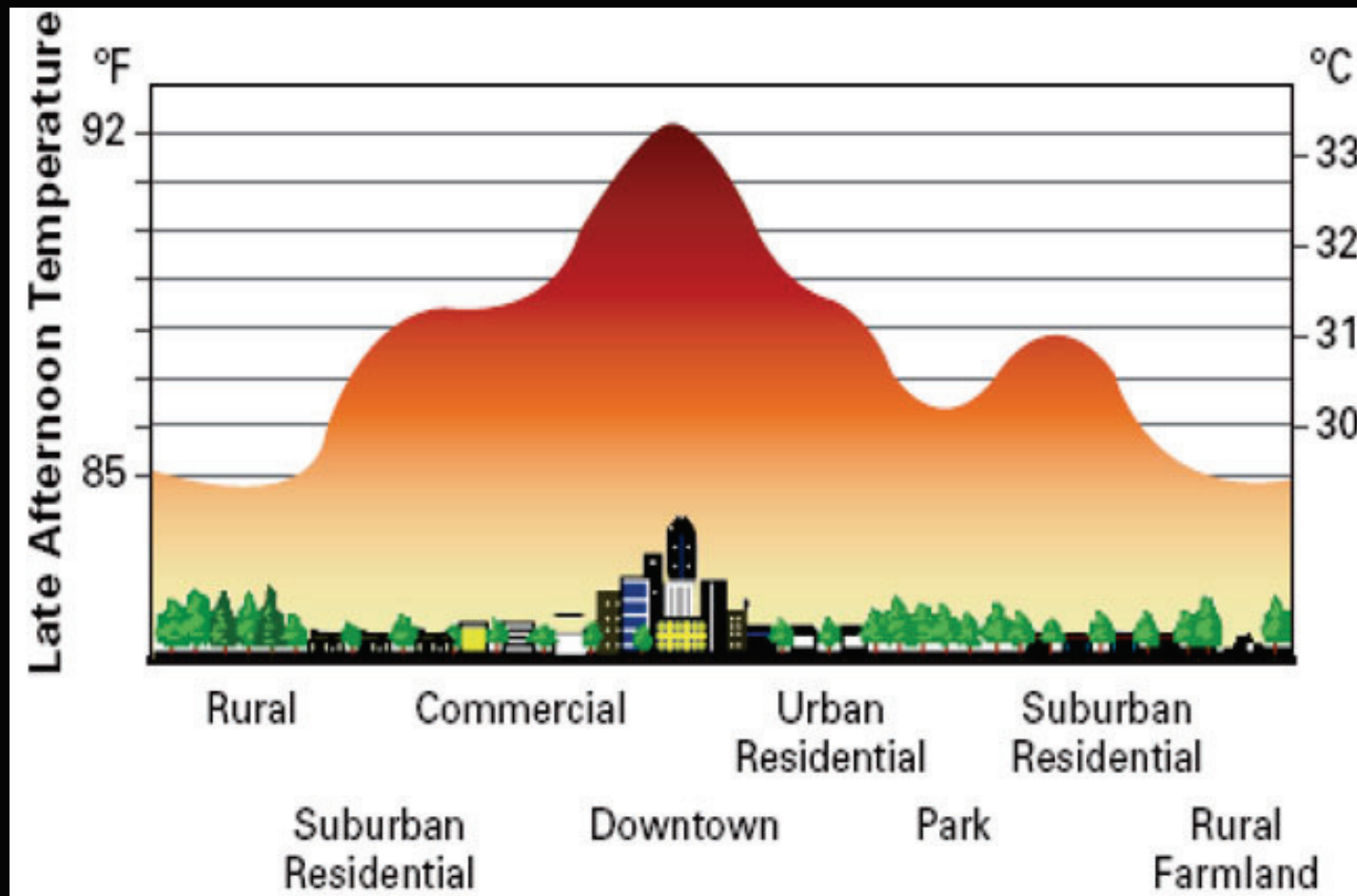
Extreme Heat

“Increases in extreme heat, particularly during heat waves, could kill more people than all other climate change impacts combined.”

(SPUR, 2011)



The Urban Heat Island



The Urban Heat Island - Mitigation Strategies

- Tree and vegetative cover
- Green Roofs
- “Cool” roofs
- “Cool” pavements



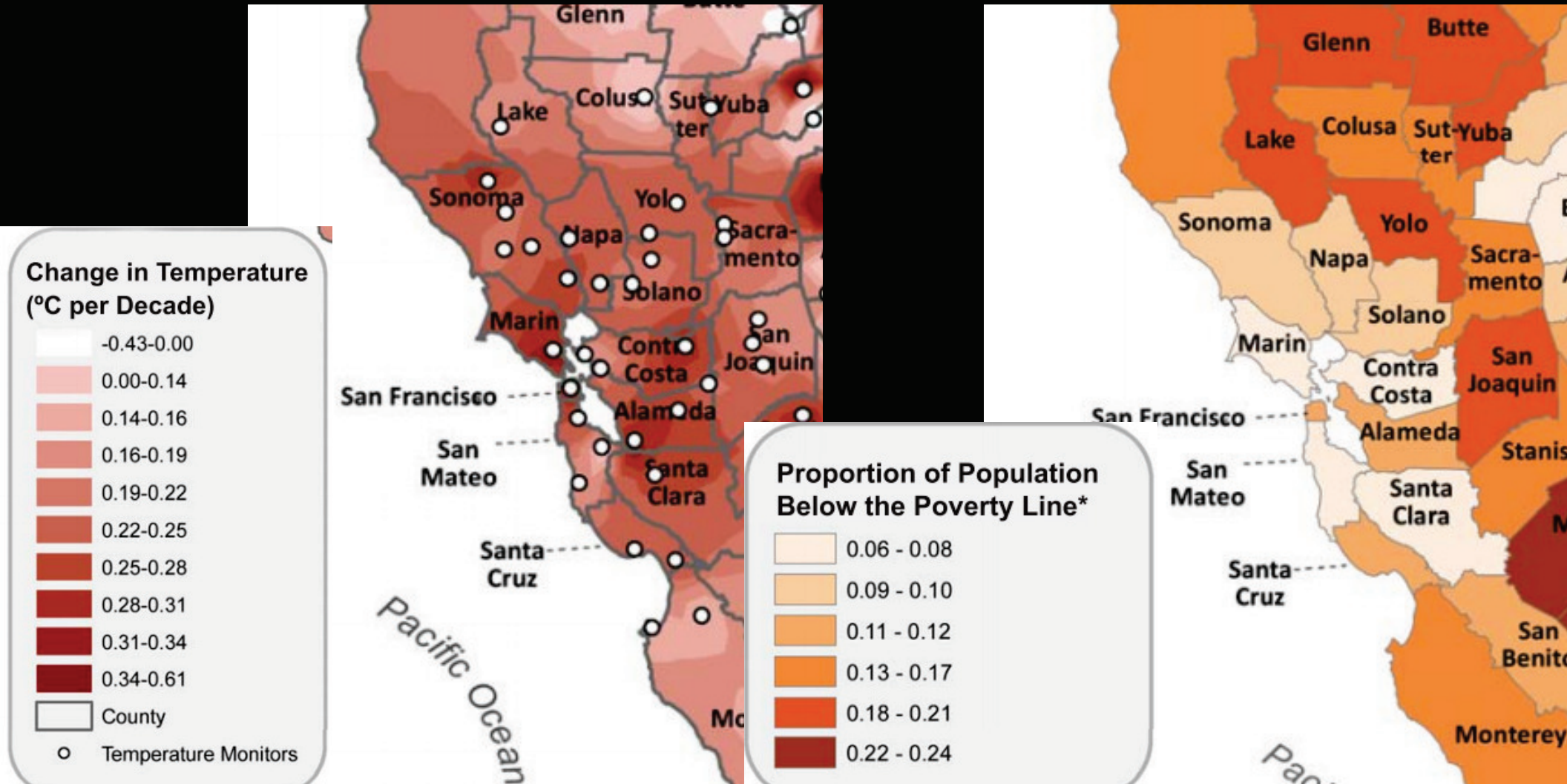
Air quality

- Increased exposure to ground-level ozone (smog)
- Increased exposure to small particulate matter (PM)



Vulnerable populations

- Low-income, children and the elderly will be especially impacted by climate change



Recommendations

1. County-wide climate-preparedness plan
2. Reduce the Urban Heat Island Effect
3. Build public warning systems
4. “Heat response plans”
5. Air quality control

